

ANTI-FATIGUE PRODUCTS

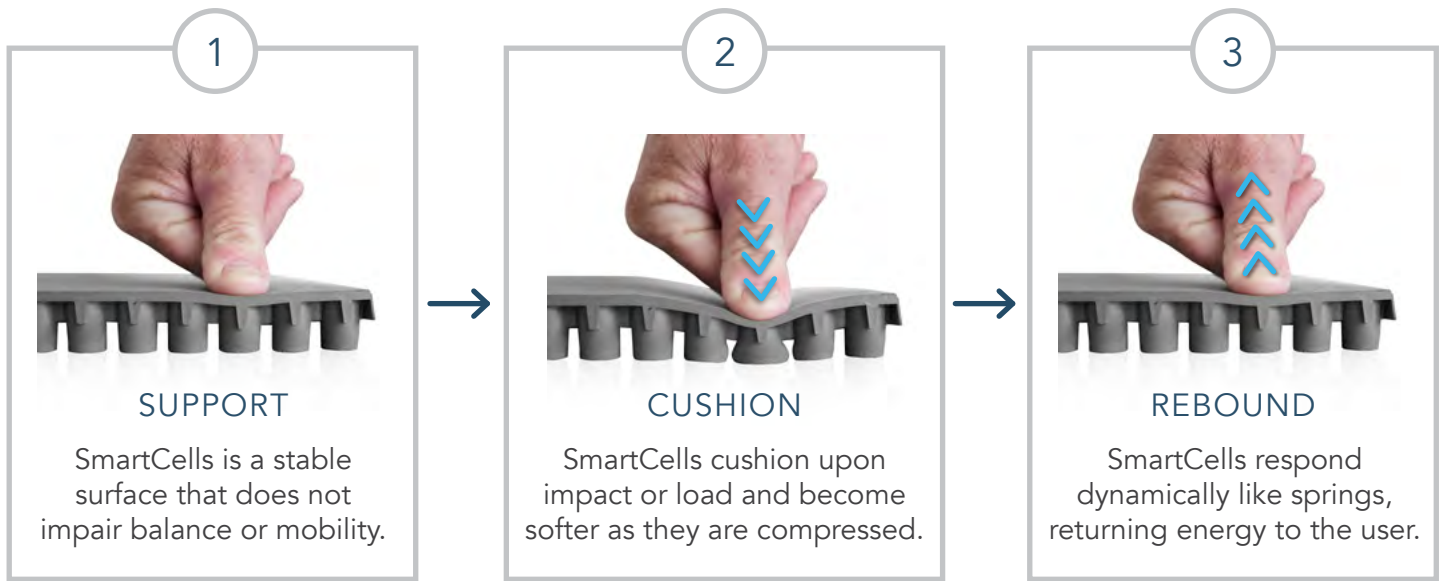
CUSTOM FLOORING | MATS | RUNNERS | INSOLES



Life Shouldn't Hurt

SmartCells mats and flooring solutions are designed to solve life's painful problems. Our patented technology provides a stable cushioning foundation that is not only supportive but also significantly reduces impact forces.

HOW SMARTCELLS WORK:



Developed by Satech, Inc., SmartCells has advanced the cushioning industry through its patented technology. SmartCells have been optimized to reduce standing worker fatigue, minimize fall-related injuries, and reduce cumulative stress and impact injuries during fitness and rehabilitation activities.

To find out more, visit: www.smartcellsusa.com/technology



SmartCells products are backed by our 8-year warranty. Contact us with any questions or to learn more:

EMAIL : info@smartcellsusa.com
OFFICE : (360) 748-8711

TABLE OF CONTENTS

MATS AND FLOORING

Mat Products	3 - 6
Flooring Products	7 - 10

SPECIALTY COMPOUNDS

Electrostatic Dissipating (ESD) Products	11 - 14
Grease Resistant (Nitrile) Products	15 - 18
Anti-microbial Products	19 - 22

CUSTOM OPTIONS 23 - 26

INSOLES 27 - 28

SUPPLEMENTARY ITEMS 29 - 30

Transition Ramps	31 - 32
Connectors, Stiffeners, and Slip Resistant Strips	33 - 34
Finish and Surface Options	35 - 36

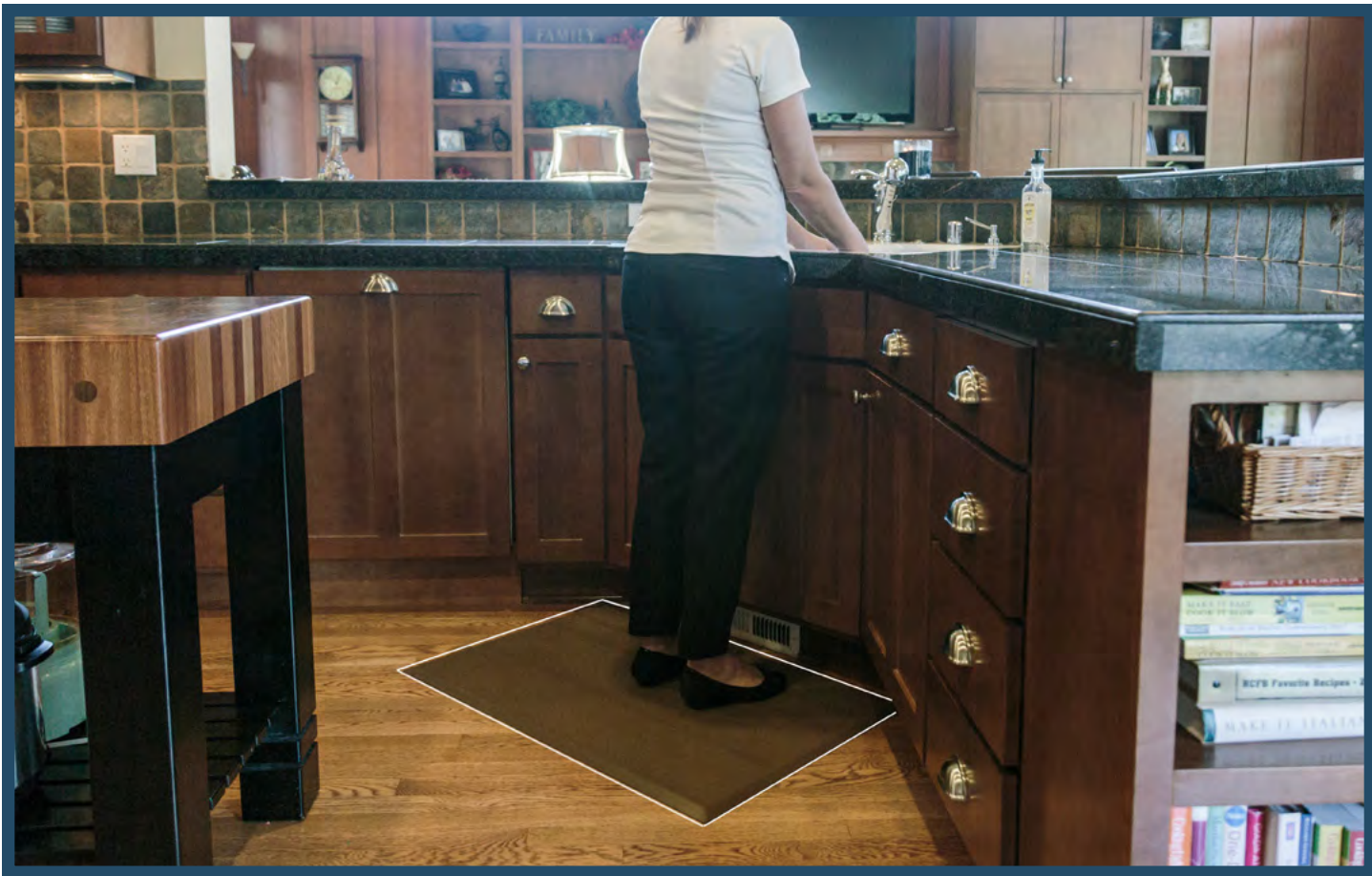
MATS

2' x 3' | 3' x 5' | 22" Octagonal

Airports & Airlines | Manufacturing | Pharmacy | Automotive

Medical | Government & Military | Distribution

Office | Retail | Residential



2' x 3' Smooth Top Mat



Size: 2' x 3'

Thickness: 1/2"

Polymers: SBR, EPDM

Surface Texture: Smooth

Finish Options: Silk, Poly Coat

Edge: Molded Bevel

Weight: 12 lbs



Constructed of 100% non-porous rubber, this mat features molded beveled edges and a smooth surface for easy cleaning. This versatile size is perfect to bring comfort and functionality to individual workstations, standing desks, counters, and kiosks. All SmartCells products are designed to provide years of uninterrupted use in the toughest environments.

Applications:

Commercial
Residential
Office / Retail
Industrial

2' x 3' SlimLine Basket Weave Mat



Size: 2' x 3'

Thickness: 3/8"

Polymers: EPDM

Surface Texture: Basket Weave

Finish Options: None

Edge: Molded Bevel

Weight: 8 lbs

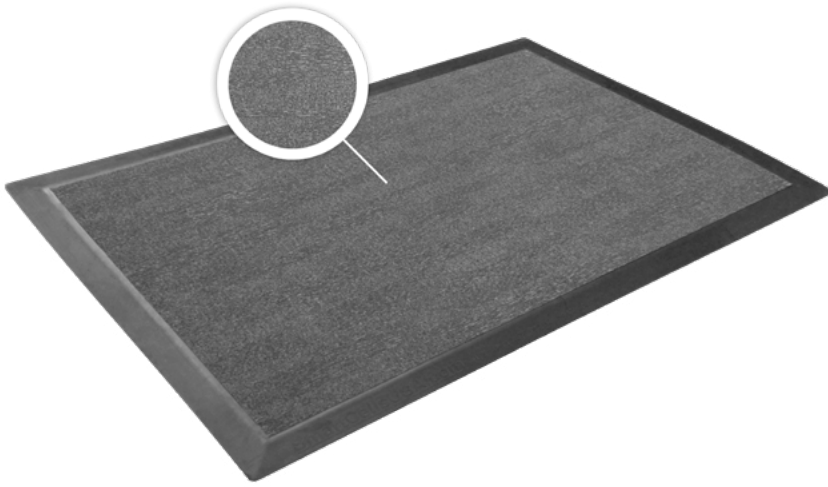


The 2x3 SlimLine mat has a stylish basket weave surface providing a more aesthetically pleasing appearance for home, office, and retail environments. This mat integrates all the benefits of SmartCells cushioning technology in a thinner, lighter version. All SmartCells products are constructed of 100% non-porous rubber that will not absorb water and are designed to provide years of uninterrupted use.

Applications:

Residential
Office
Retail

2' x 3' Carpet Top Mat



Size: 2' x 3'

Thickness: 1/2"

Polymers: SBR

Surface Texture: Carpet Top

Finish Options: FORBO Flowtex

Edge: Molded Bevel

Weight: 12 lbs



The Carpet Top surface provides a more luxurious appeal, features molded beveled edges, and a replaceable carpet insert. This mat can easily integrate into any design space while providing all the benefits of SmartCells cushioning technology.

Applications:

Residential
Office
Retail

3' x 5' Smooth Top Mat



Size: 3' x 5'

Thickness: 1/2"

Polymers: SBR, EPDM

Surface Texture: Smooth

Finish Options: Silk, Poly Coat

Edge: Molded Bevel

Weight: 32 lbs



Our 3x5 mats offer all the benefits of Smartcells cushioning technology in a larger footprint mat. Constructed of 100% rubber, this mat features molded beveled edges and a smooth surface for easy cleaning. Perfect to bring comfort and functionality to larger areas. All SmartCells products are designed to provide years of uninterrupted use in the toughest environments.

Applications:

Residential
Office / Retail
Commercial
Industrial

3' x 5' Basket Weave Mat



Size: 3' x 5'

Thickness: 1/2"

Polymers: EPDM

Surface Texture: Basket Weave

Finish Options: None

Edge: Molded Bevel

Weight: 26 lbs



This 3x5 mat features a stylish basketweave surface providing a more aesthetically pleasing appearance for home, office and retail environments. Constructed of 100% non-porous rubber, this mat features molded beveled edges, perfect to bring comfort and functionality to larger areas. All SmartCells products are designed to provide years of uninterrupted use in the toughest environments.

Applications:

Residential
Office / Retail
Commercial

22" Octagonal Mat



Size: 22"

Thickness: 1/2"

Polymers: SBR, EPDM

Surface Texture: Smooth

Finish Options: Silk, Poly Coat

Edge: Molded Bevel

Weight: 6 lbs



The SmartCells Octagonal Mat is used by greeters, ticket holders, police, fire, flaggers, linemen, and many others. It is a perfect solution for your personal space because it is lightweight and portable. You can now have the superior benefits of SmartCells Cushioning Technology with you wherever you might be.

Applications:

Workstations
Construction
Flaggers
Greeters

Portable Kneeling Mat



Size: Multiple sizes available

Thickness: 1"

Polymers: SBR, EPDM

Surface Texture: Smooth

Finish Options: None

Edge: Cut Edge

Weight: Varies



Perfect for mechanics, maintenance, garden, and home, the SmartCells Kneeling Mat provides portability and comfort while performing your tasks. Its 100% non-porous rubber construction will not absorb water and can be easily rinsed after use.

Applications:

Residential
Work on the go
Industrial

Stackable Ergonomic Riser



Size: 2' x 3'

Height Options: 3", 6", or 9"

Surface Texture: Smooth

Applications: Works with any SmartCells 2' x 3' mat

Edge: Molded Bevel

Weight: 12 lbs per riser



As a workstation accommodation solution, SmartCells offers ergonomic risers to elevate workstations. Constructed of 100% molded plastic, risers can be used with any 2x3 SmartCells mat. These stackable risers increase the height of your mat in 3 inch increments; 3", 6" and 9" heights. The SmartCells mat is affixed to the riser using a plastic retaining plug. Brass screw bushings with stainless screws are an available option.

Applications:

Industrial
Office / Retail
Pharmacy / Lab
Workstations

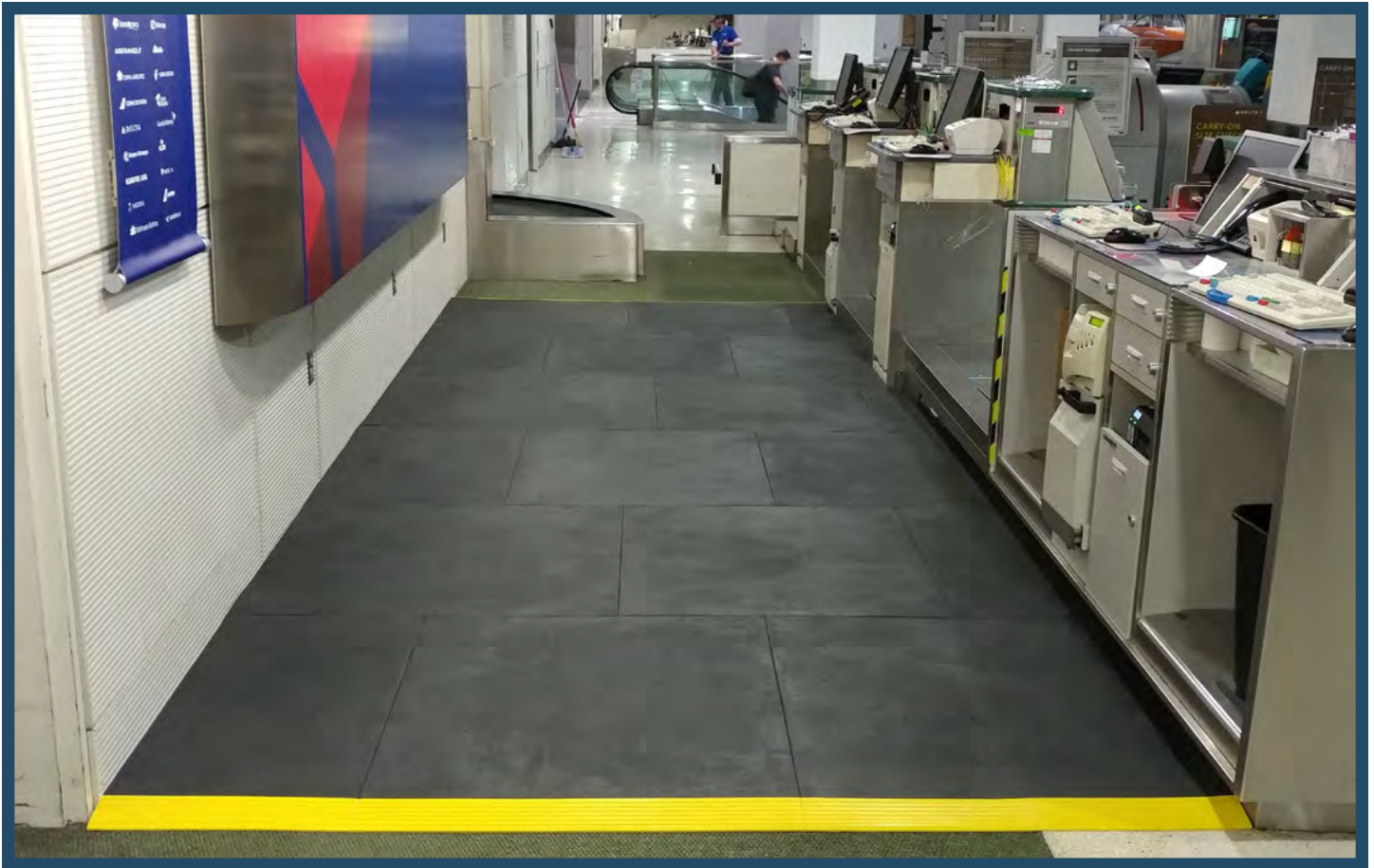
FLOORING

Anti-Fatigue Flooring Tiles

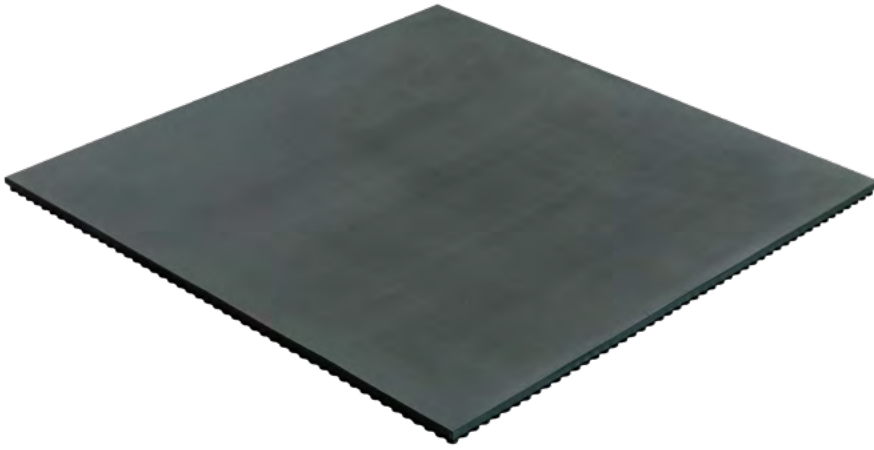
Airports & Airlines | Manufacturing | Pharmacy | Automotive

Medical | Government & Military | Distribution

Office | Retail | Residential



Anti-Fatigue Flooring Tiles



Size: 3' x 3' tiles

Thickness: 1/2" or 1"

Polymers: SBR, EPDM

Surface Texture: Smooth

Finish Options: Silk, Poly Fleck, Poly Coat, May be used as an underlayment for Sheet Vinyl or Carpet Tile

Edge: See page 31 for ramp options

Weight: 2 lbs/sq. ft. or 3 lbs/sq. ft.



The 3' x 3' SmartCells flooring tile is used to create custom-sized, modular mats for workstations, around counters and equipment as well as wall-to-wall flooring solutions. Constructed of 100% non-porous rubber, this tile features squared edges to provide a smooth surface for continuous flooring applications. All SmartCells products are designed to provide years of uninterrupted use in the toughest environments.

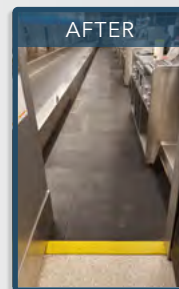
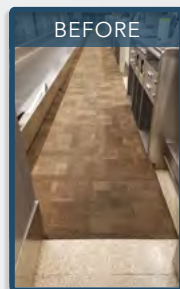
Applications:

Airports / Airlines
Pharmacy / Labs
Office / Retail
Commercial
Industrial

FINISHED INSTALLATIONS



Custom Wall-to-Wall Flooring
MILITARY PHARMACY



Custom Flooring
AMERICAN AIRLINES



Custom Wall-to-Wall Flooring
MANUFACTURING

FINISH OPTIONS

See page 31 for full details on surface coatings and overlay options.



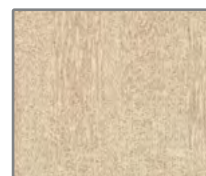
SILK



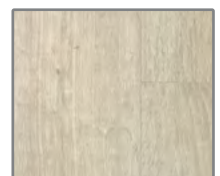
POLY COAT



POLY FLECK



CARPET TILE



VINYL

Solutions Designed for Your Environment

Enhance employee safety and productivity with SmartCells custom area flooring

No longer is your solution limited to abutting or stacking smaller mats, which can create slip, trip, and fall hazards while trying to cover unique shaped workstations or large areas.

SmartCells offers 3' x 3' flooring tiles in both ½" and 1" thick options that can be used to create custom modular floor mats and wall-to-wall solutions. SmartCells Flooring Tiles along with our selection of transition ramps, reducers, and edging allow us to provide you with a custom anti-fatigue flooring solution. Covering the areas where your employees are working and walking ensures they are receiving the maximum benefits of anti-fatigue technology throughout their workday.

SmartCells Anti-Fatigue Flooring Comparison

1/2" Flooring Features	SmartCells Flooring Benefits	1" Flooring Features
<ul style="list-style-type: none"> • Lower profile • Suitable for numerous applications • Silk/Poly finish options • Modular and portable • Saves cost when 1" is not needed • 8 year warranty 	<ul style="list-style-type: none"> • Energizing and responsive surface • Optimized to reduce musculoskeletal stress • Custom fit for any environment • Reduces impact and fatigue • Product compatibility matched to environment 	<ul style="list-style-type: none"> • Supports most rolling loads • Suits industrial and commercial environments • Overlay or poly/silk finish options • Greater impact protection • 8 year warranty

When would I choose 1/2" flooring?

SmartCells ½" flooring is the best choice for areas that are mainly foot traffic. The lower ½" profile provides all the benefits of the SmartCells Anti-Fatigue Technology but is less suited for point and heavier rolling loads. Wheels from rolling loads may cause the mat to bunch up or "wave".

When would I choose 1" flooring?

SmartCells 1" flooring is the best choice for areas that are mainly foot traffic but may also have lightweight carts moving across the surface. The higher profile and additional weight of the 1" flooring material helps resist "bunching" and "waving", minimizing the migration or movement of the mat. SmartCells flooring tiles can be used as a finish surface or an underlayment for approved carpet tiles and sheet vinyl providing the ultimate flexibility when designing your space.

General Considerations

SmartCells flooring tiles are not designed to support heavy rolling loads. Load spreaders may be used to accomodate moderate point loads.

To discuss which solution will best meet your needs please contact your SmartCells representative.

ANTI-FATIGUE

Specialty Compound

ESD

Electronics Manufacturers | Aerospace | Manufacturing

Commercial | Industrial



Smooth Top ESD Mat



Size: 2' x 3' & 3' x 5'

Thickness: 1/2"

Polymers: SBR

Surface Texture: Smooth

Options: Ground post available

Edge: Molded Bevel

2x3: 12 lbs **3x5:** 32 lbs



SmartCells ESD mats are constructed of 100% non-porous rubber with molded beveled edges and a smooth surface for easy cleaning. The conductive performance of these mats are $< 10^6$ Ohms to ensure effective dissipation of static electricity. Grounding posts and wires are optional. SmartCells ESD mats are perfect for providing static dissipation while providing outstanding anti-fatigue benefits.

Applications:
Industrial
Manufacturing
Electronics

22" Octagonal ESD Mat



Size: 22"

Thickness: 1/2"

Polymers: SBR

Surface Texture: Smooth

Options: Ground post available

Edge: Molded Bevel

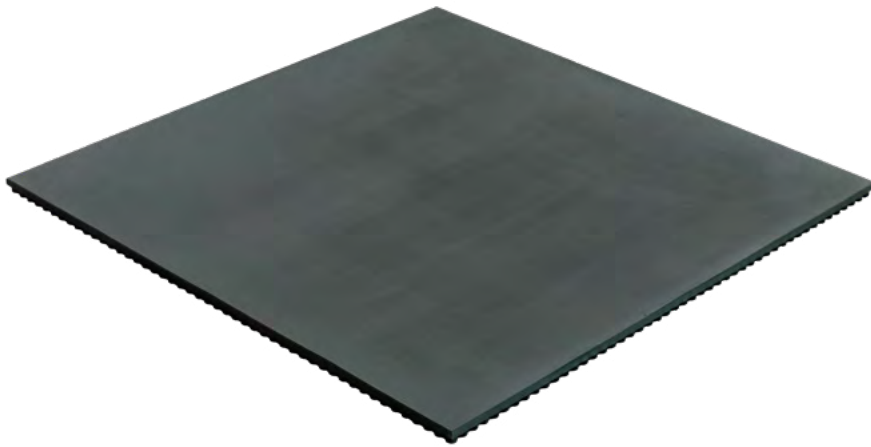
Weight: 6 lbs



The 22" octagonal ESD mat has the same ESD properties as the larger mat but in a smaller, portable design. It is a perfect solution for your personal space because it is lightweight and portable. You can now have the superior benefits of SmartCells Cushioning Technology with you wherever you might be.

Applications:
Industrial
Manufacturing
Electronics
Portable

ESD Flooring Tile - 1/2" Thick



Size: 3' x 3'

Thickness: 1/2"

Polymers: SBR

Surface Texture: Smooth

Options: Ground Post Available

Edge: See page 31 for ramp options

Weight: 2 lbs / sq. ft.

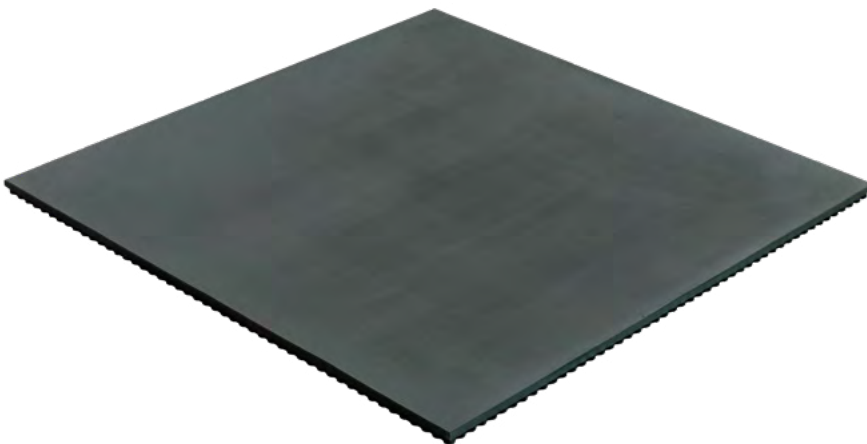


The SmartCells 3' x 3' x 1/2" ESD flooring tile is used to create custom sized modular floor mats for workstations, around counters and equipment, as well as wall-to-wall flooring solutions. These non-porous tiles feature squared edges to provide continuous flooring applications. The conductive performance of these tiles are $< 10^6$ Ohms to ensure effective dissipation of static electricity while also providing outstanding anti-fatigue benefits. Grounding posts and wires are optional.

Applications:

Industrial
Manufacturing
Electronics

ESD Flooring Tile - 1" Thick



Size: 3' x 3'

Thickness: 1"

Polymers: SBR

Surface Texture: Smooth

Options: Ground post available

Edge: See page 31 for ramp options

Weight: 3 lbs / sq. ft.



The SmartCells 3' x 3' x 1" ESD flooring tile is used to create custom sized modular floor mats for workstations, around counters and equipment, as well as wall-to-wall flooring solutions. These non-porous tiles feature squared edges to provide a smooth surface for continuous flooring applications. The conductive performance of these tiles are $< 10^6$ Ohms to ensure effective dissipation of static electricity while also providing outstanding anti-fatigue benefits. The 1" thick structure enables most rolling loads less than 150 lbs without difficulty.

Applications:

Industrial
Manufacturing
Electronics

ANTI-FATIGUE

Specialty Compound

Nitrile

Manufacturing | Commercial | Aerospace

Automotive | Industrial



Smooth Top Nitrile Mat



Size: 2' x 3' & 3' x 5'

Thickness: 1/2"

Polymers: Nitrile

Surface Texture: Smooth

Finish Options: None

Edge: Molded Bevel

2x3: 12 lbs **3x5:** 32 lbs



The Nitrile formulation in these mats is designed for work environments where exposure to oil/grease is likely. Constructed of 100% non-porous rubber, molded beveled edges, and a smooth surface for easy cleaning, these mats come in both 2x3 and 3x5 sizes; perfect to bring comfort and functionality to individual workstations. Optional slip resistant surface strips are available.

Applications:
Commercial
Manufacturing
Industrial

22" Octagonal Nitrile Mat



Size: 22"

Thickness: 1/2"

Polymers: Nitrile

Surface Texture: Smooth

Finish Options: None

Edge: Molded Bevel

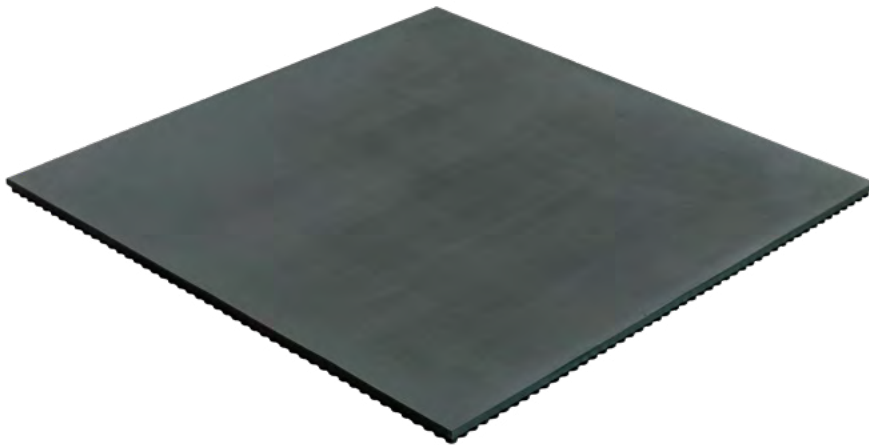
Weight: 6 lbs



The Octagonal Nitrile mat is designed for work environments where exposure to oil/grease is likely and a portable mat is needed. Constructed of 100% non-porous rubber, molded beveled edges and a smooth surface for easy cleaning, the octagonal size is perfect to bring comfort and functionality to 'on-the-go' applications. Optional slip resistant surface strips are available.

Applications:
Commercial
Manufacturing
Portable Workstations
Industrial

Nitrile Flooring Tile - 1/2" Thick



Size: 3' x 3'

Thickness: 1/2"

Polymers: Nitrile

Surface Texture: Smooth

Finish Options: None

Edge: See page 31 for ramp options

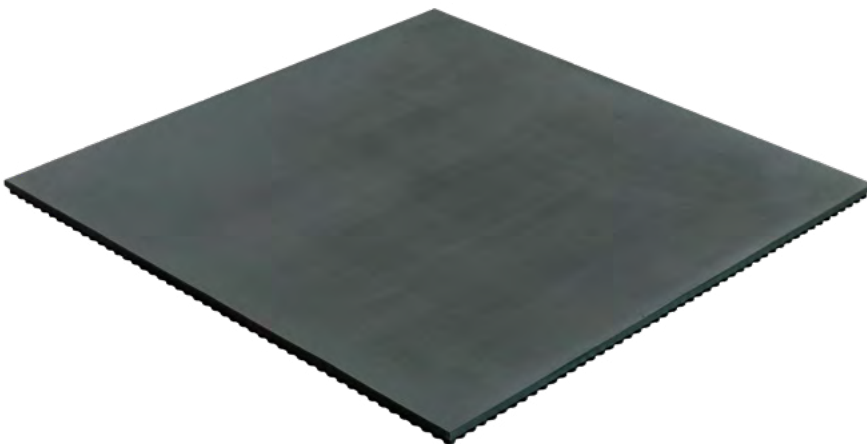
Weight: 2 lbs / sq. ft.



The 1/2" thick 3x3 SmartCells Nitrile tile is used for custom-sized workstations or wall-to-wall flooring solutions. These non-porous tiles feature squared edges to provide a smooth surface for continuous flooring applications. The Nitrile rubber formulation resists breakdown in environments where oil/grease exposure is likely. SmartCells Nitrile flooring provides outstanding anti-fatigue benefits. Optional slip resistant strips are available.

Applications:
Commercial
Manufacturing
Industrial

Nitrile Flooring Tile - 1" Thick



Size: 3' x 3'

Thickness: 1"

Polymers: Nitrile

Surface Texture: Smooth

Finish Options: None

Edge: See page 31 for ramp options

Weight: 3 lbs / sq. ft.



The 1" thick 3x3 SmartCells Nitrile tile is used for custom-sized workstations or wall-to-wall flooring solutions. These non-porous tiles feature squared edges to provide a smooth surface for continuous flooring applications. The Nitrile rubber formulation resists breakdown in environments where oil/grease exposure is likely. The 1" thick structure enables most rolling loads less than 150 lbs. without difficulty. SmartCells Nitrile flooring provides outstanding anti-fatigue benefits. Optional slip resistant surface strips are available.

Applications:
Commercial
Manufacturing
Industrial

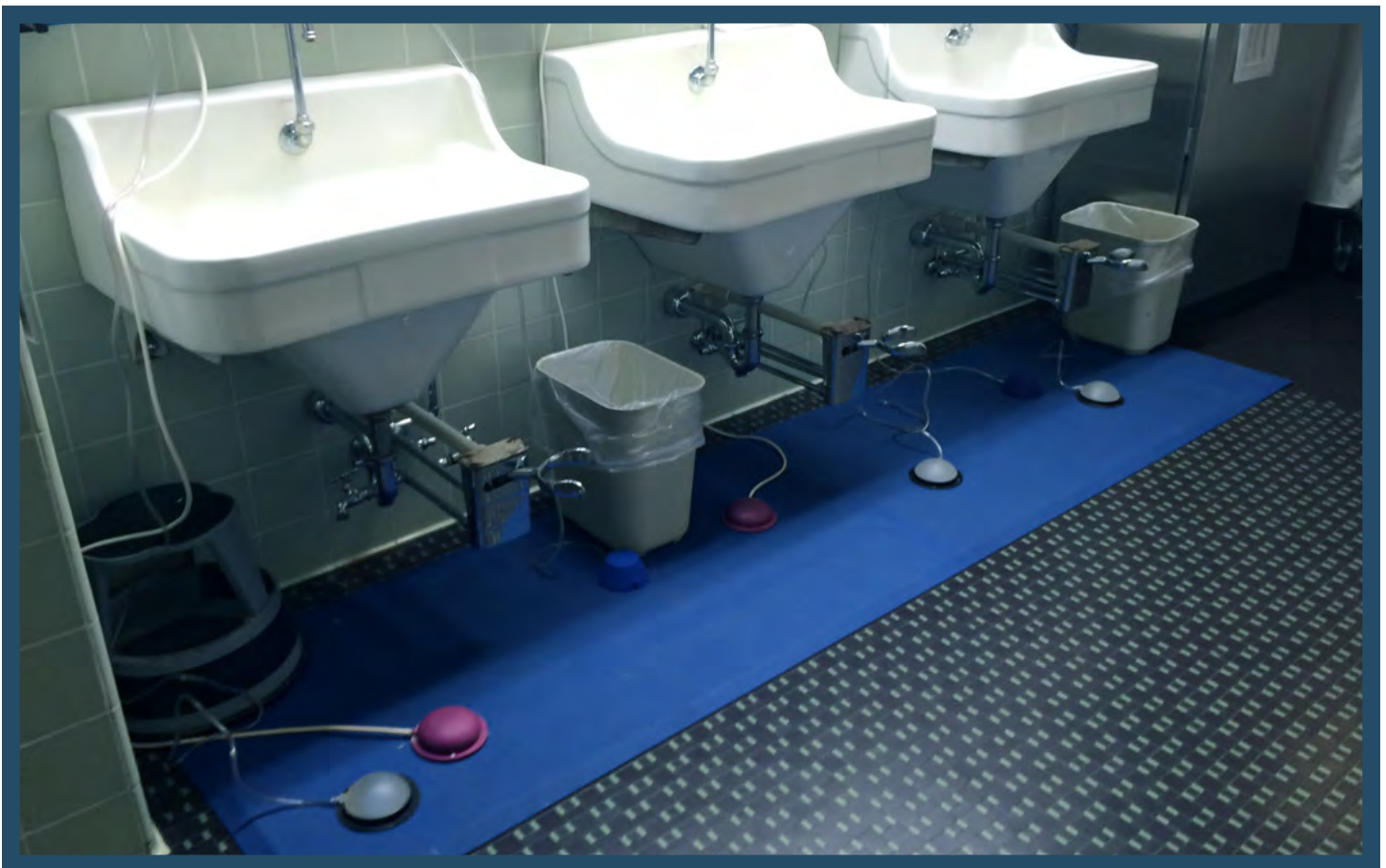
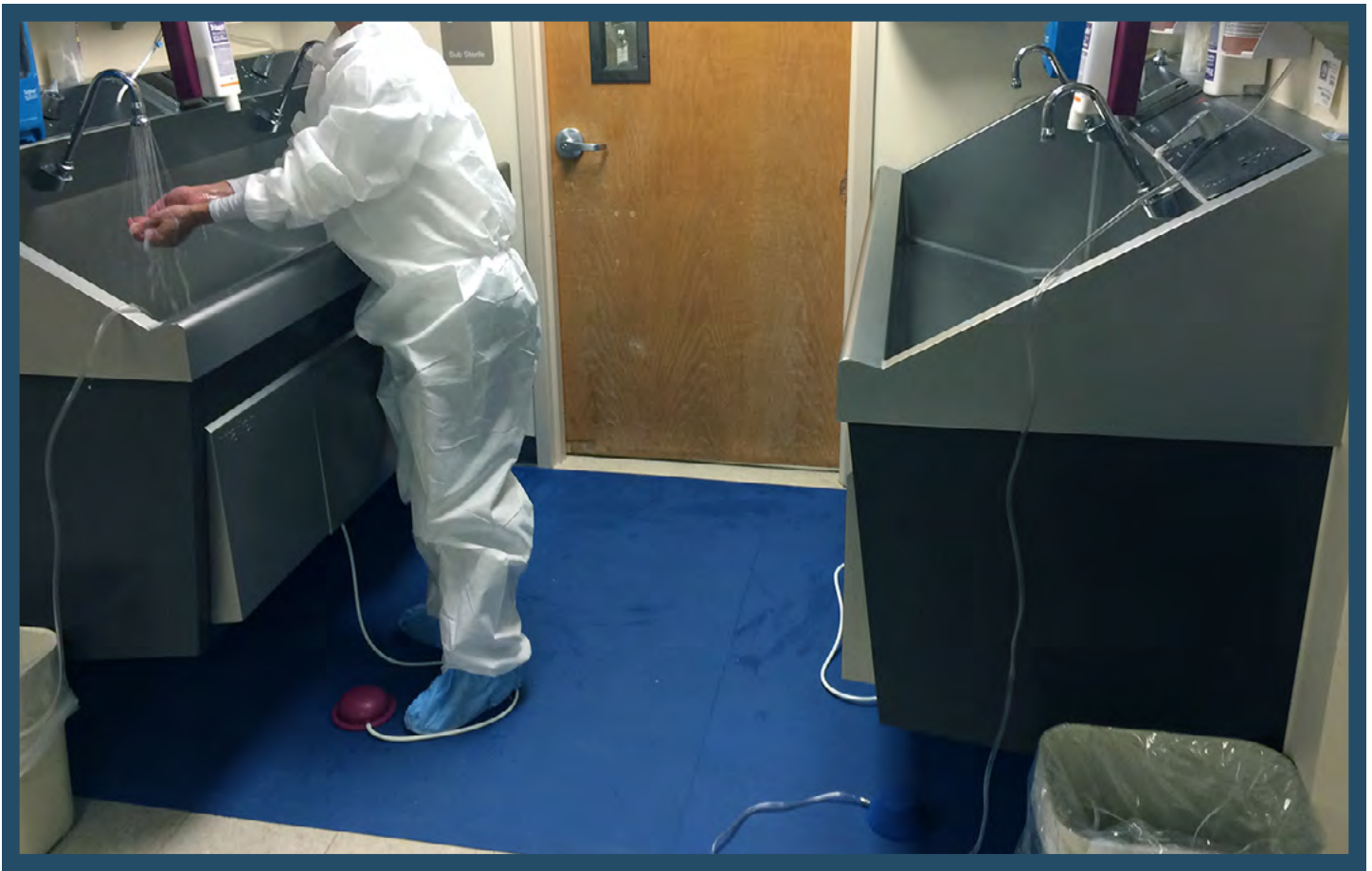
ANTI-FATIGUE

Specialty Compound

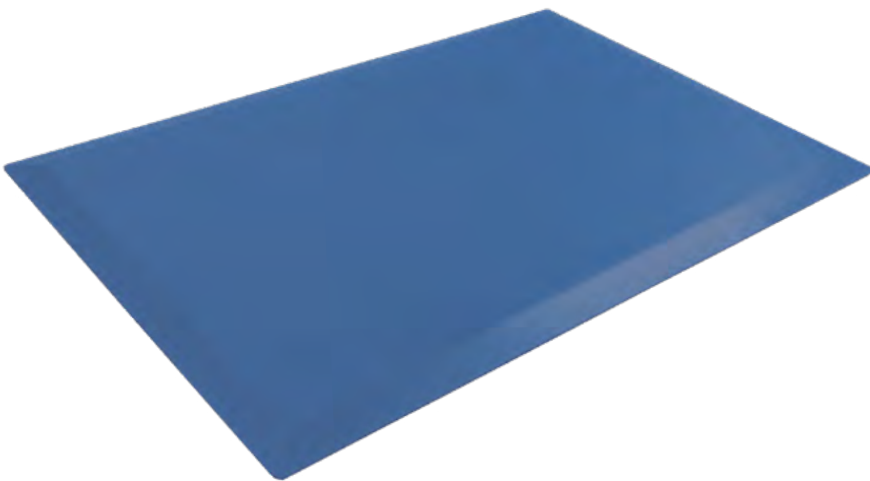
Anti-microbial

Medical Offices | Surgical Facilities | Emergency Rooms

Veterinary Facilities | Labs



2' x 3' Smooth Top Anti-microbial Mat



Size: 2' x 3'

Thickness: 1/2"

Polymers: EPDM

Surface Texture: Smooth

Finish Options: None

Edge: Molded Bevel

Weight: 12 lbs

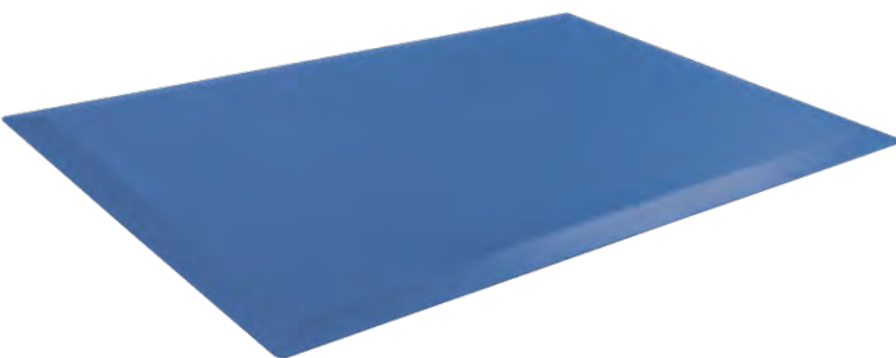


The autoclavable EPDM rubber formulation in this mat incorporates an anti-microbial additive to prevent microbe growth. Constructed of 100% non-porous rubber, this mat features molded beveled edges and a smooth surface for easy cleaning. This versatile size is perfect to bring comfort and functionality to individual workstations.

Applications:

Care Facilities
Medical Offices
Operating Rooms
Hospitals / ER

3' x 5' Smooth Top Anti-microbial Mat



Size: 3' x 5'

Thickness: 1/2"

Polymers: EPDM

Surface Texture: Smooth

Finish Options: None

Edge: Molded Bevel

Weight: 32 lbs



The autoclavable EPDM rubber formulation in this mat incorporates an anti-microbial additive to prevent microbe growth. Constructed of 100% non-porous rubber, this mat features molded beveled edges and a smooth surface for easy cleaning to bring comfort and functionality to larger areas. All SmartCells products are designed to provide years of uninterrupted use in the toughest environments.

Applications:

Care Facilities
Medical Offices
Operating Rooms
Hospitals / ER

22" Octagonal Anti-microbial Mat



Size: 22"

Thickness: 1/2"

Polymers: EPDM

Surface Texture: Smooth

Finish Options: None

Edge: Molded Bevel

Weight: 6 lbs



The autoclavable EPDM rubber formulation in this mat incorporates an anti-microbial additive to prevent microbe growth. Constructed of 100% non-porous rubber, this mat features molded beveled edges and a smooth surface for easy cleaning. The octagonal size is perfect to bring comfort and functionality to individual workstations and 'on-the-go' applications.

Applications:

Care Facilities
Medical Offices
Operating Rooms
Hospitals / ER

Anti-microbial Surgery Step Stool



Mat Size: 18" x 14" x 1/2"

Stool Height: 6" or 12"

Polymers: EPDM

Surface Texture: Smooth

Finish Options: None

Edge: None

Single: 13 lbs **Double:** 19 lbs



This step stool is designed for surgical environments where infection control is essential. The stool incorporates a smooth SmartCells anti-microbial mat top for fatigue relief. The surgical stool can be placed on top of an optional base stool to provide additional height. The anti-fatigue mat top is removable and autoclavable for cleaning purposes.

Applications:

Care Facilities
Medical Offices
Operating Rooms
Hospitals / ER

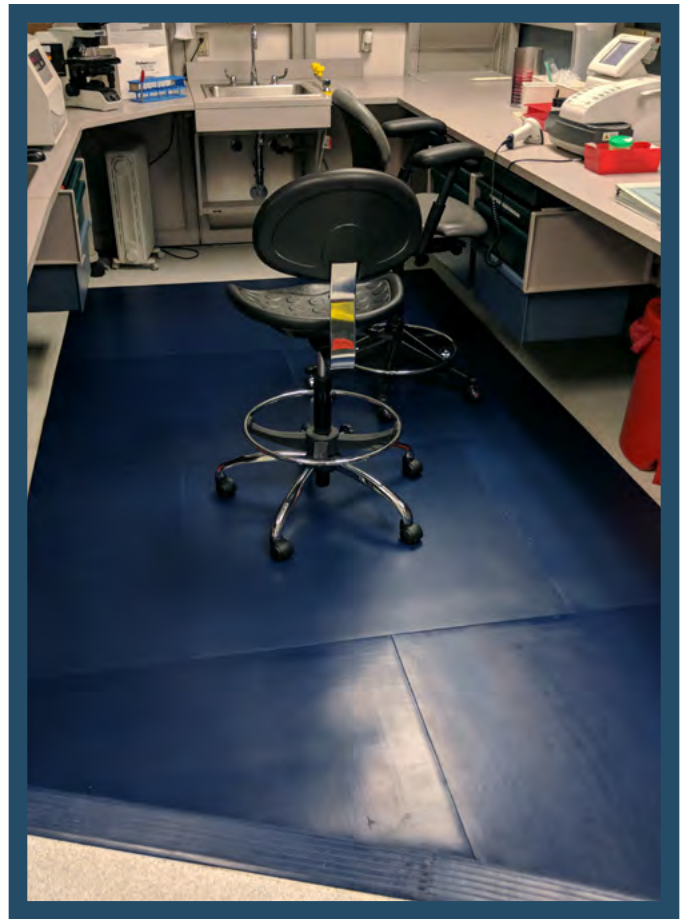
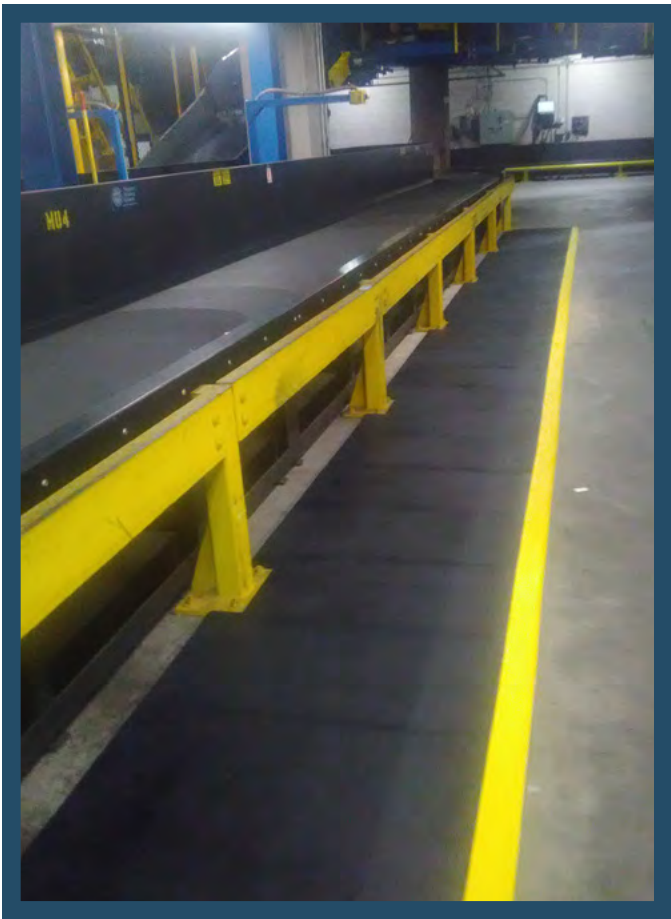
CUSTOM OPTIONS

Custom Runners | Custom Area Modular Floor Mats

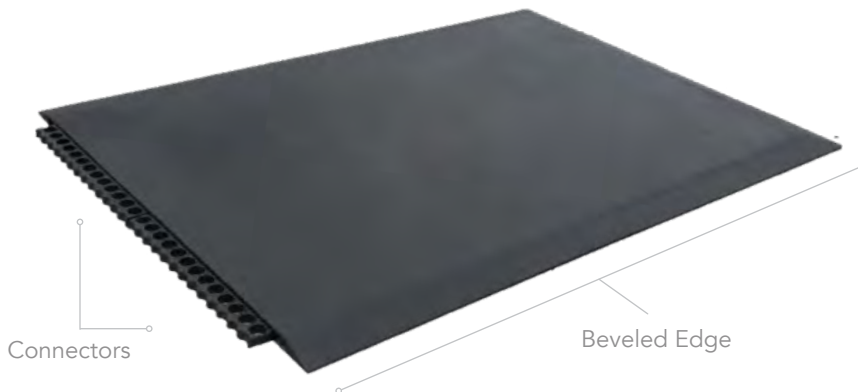
Airports & Airlines | Manufacturing | Pharmacy | Automotive

Medical | Government & Military | Distribution

Office | Retail | Residential



2' Wide Custom Runner



Size: 2' x Any length
Provided in connectable sections

Thickness: 1/2"

Polymers: SBR, EPDM, Nitrile, ESD, Anti-microbial

Surface Texture: Smooth

Finish Options: Depends on Polymer

Edge: Molded Bevel

Weight: 2 lbs / sq. ft.



The SmartCells 2' wide runner is constructed of connectable sections and can be configured to any length. The mat sections are 100% non-porous rubber and have molded beveled edges around the entire perimeter. The versatility of connectable sections makes it easy to provide a continuous anti-fatigue surface for long customer service counters or assembly lines with many close workstations.

Applications:

Airports / Airlines
Pharmacy / Lab
Distribution
Industrial

3' Wide Custom Runner



Size: 3' x Any length
Provided in connectable sections

Thickness: 1/2"

Polymers: SBR, EPDM, Nitrile, ESD, Anti-microbial

Surface Texture: Smooth

Finish Options: Depends on Polymer

Edge: Molded Bevel

Weight: 2 lbs / sq. ft.

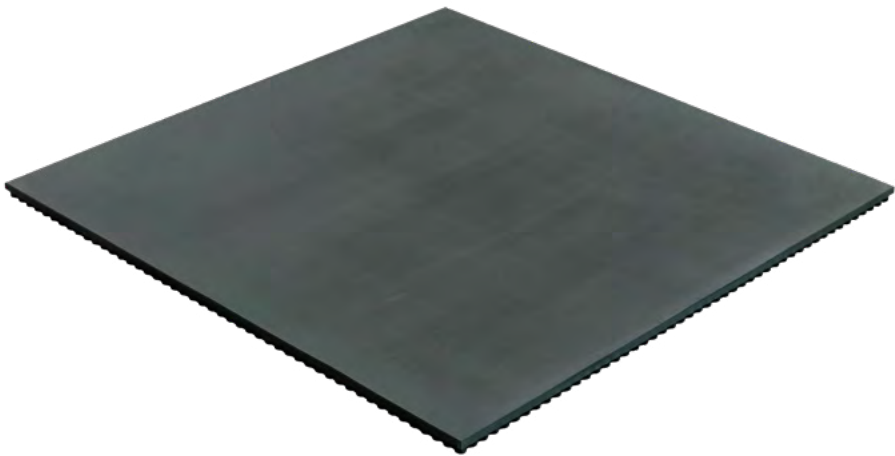


The SmartCells 3' wide runner is constructed of connectable sections and can be configured to any length. The mat sections are 100% non-porous rubber and have molded beveled edges around the entire perimeter. The versatility of connectable sections makes it easy to provide a continuous anti-fatigue surface for long customer service counters or assembly lines with many close workstations.

Applications:

Airports / Airlines
Pharmacy / Lab
Distribution
Industrial

Custom Area Modular Floor Mats



- Size:** 3' x 3' tiles
- Thickness:** 1/2" or 1"
- Polymers:** SBR, EPDM, Nitrile, ESD
- Surface Texture:** Smooth
- Finish Options:** Silk, Poly Coat, Poly Fleck
- Edge:** See page 31 for ramp options
- Weight:** 2 lbs/sq. ft. or 3 lbs/sq. ft.



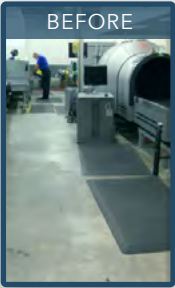
SATECH, Inc. invented the concept of anti-fatigue flooring. By combining the SmartCells flooring tiles, ramps, and transitions, we are able to create the perfect solution for your anti-fatigue flooring needs. The modular SmartCells tiles are used to create custom-sized workstations or wall-to-wall flooring solutions covering critical areas where employees are most active. The tiles are assembled in connectable sections to custom fit the workstation area desired. Design and optional layout services are available to ease the implementation burden for customers.

- Applications:**
- Airports / Airlines
 - Pharmacy / Lab
 - Manufacturing
 - Industrial

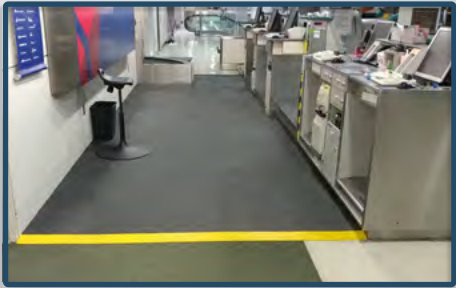
FINISHED INSTALLATIONS



Custom Flooring
EASTON



Custom Flooring
TSA



Custom Flooring Workstation
DELTA AIRLINES

FINISH OPTIONS

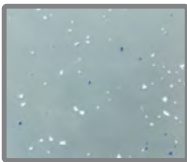
See page 31 for full details on surface coatings and overlay options.



SILK



POLY COAT



POLY FLECK

INSOLES

Anti-Fatigue Industrial Insoles

Airlines | Manufacturing | Pharmacy | Automotive

Medical | Government & Military | Distribution

Office | Retail | Residential

Industrial Insole



Men's Sizes: 6 - 15

Women's Sizes: 5 - 14

Full Sizes Only

Thickness: 2.55 mm at Forefoot

SmartCells: Heel and Forefoot

Material: EVA Foam

Arch Support: Pre-molded

Weight: 3 Ounces per pair



Top



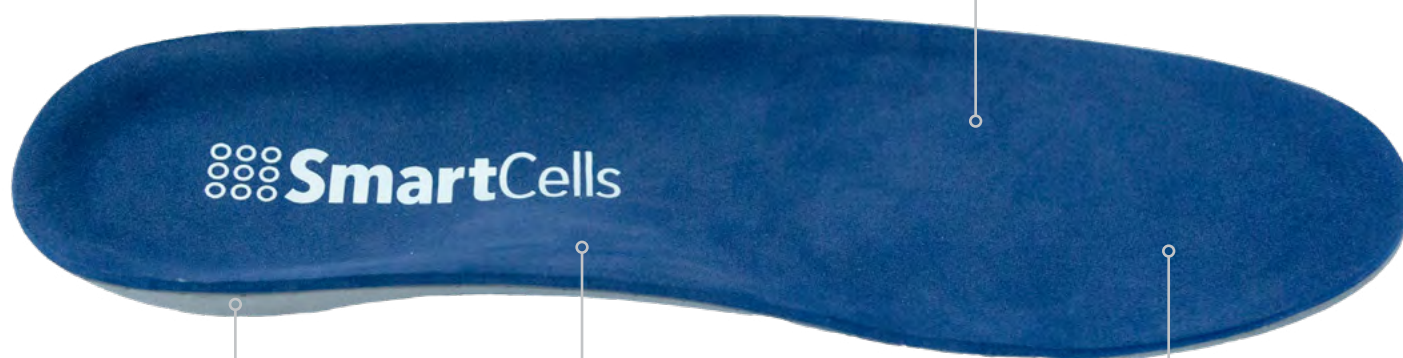
Bottom

The SmartCells Industrial Insole is the perfect solution for standing workers and anyone looking for fatigue relief. Featuring SmartCells Cushioning in the heel and forefoot, these insoles significantly reduce impact forces and also return the energy back to your body. The additional layers of EVA cushion add a soft yet sturdy top cover to keep you comfortable throughout the day. Best fits athletic, boot, and casual shoe types.

Applications:

Standing Workers
Construction
Distribution
Logistics

EVA Foam Top Cover



SmartCells in Heel

Thermoplastic Arch

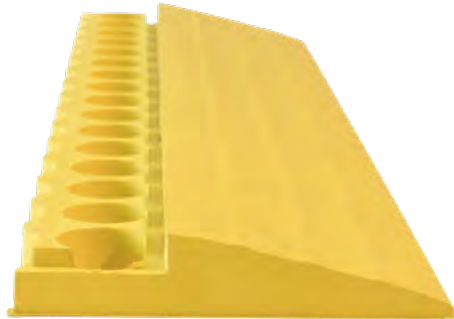
SmartCells in Forefoot

SUPPLEMENTARY ITEMS

Transition Ramps | Connectors | Stiffeners



1/2" Flooring Connectable Ramp



Size: 2.5" x 3' Sections

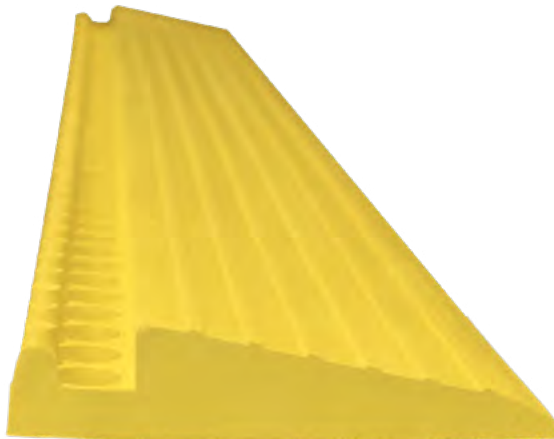
Weight: 0.35 lbs per linear foot

Pitch: 0 to 1/2" over 2.5"

Polymers: SBR, ESD, Nitrile

Colors: Yellow, Black,
Color Matching tile options

1" Flooring Connectable Ramp



Size: 3.5" x 3' Sections

Weight: 1 lb per linear foot

Pitch: 0 to 1" over 3.5"

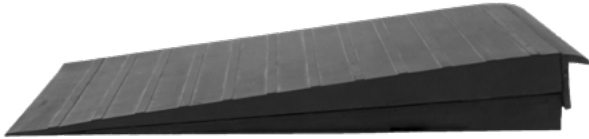
Polymers: SBR, ESD, Nitrile

Colors: Yellow, Black,
Color Matching tile options

1" Flooring with 3.5" wide ramp



6" Transition Ramp



Size: 6" x 3' Sections

Weight: 1.4 lbs / linear foot

Pitch: 0 to 1/2" over 6" | 0 to 1" over 6"

Polymers: SBR, ESD, Nitrile

Colors: Yellow, Black,
Color Matching tile options

12" Transition Ramp



Size: 12" x 3' Sections

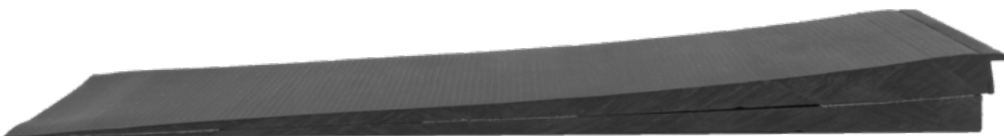
Weight: 2.7 lbs / linear foot

Pitch: 0 to 1/2" over 12"

Polymers: SBR, ESD, Nitrile

Colors: Yellow, Black,
Color Matching tile options

18" Transition Ramp



Size: 18" x 3' Sections

Weight: 7 lbs / linear foot

Pitch: 0 to 1/2" over 18"

Polymers: Vinyl

Colors: Black

1" Flooring Connectors



TOP



BOTTOM

Size: 10" x 2"

Thickness: For 1" tiles

Polymers: Dependent on application

Colors: Black

Flooring connectors for 1" flooring.
Used in modular configurations.

1/2" Flooring Connectors



TOP



BOTTOM

Size: 10" x 2"

Thickness: For 1/2" tiles

Polymers: Dependent on application

Colors: Black

Flooring connectors for 1/2" flooring.
Used in modular configurations.



1/2" Flooring with 1/2" Connector

Slip Resistant Strips



Size: Factory applied, priced per linear foot

Width: 1 1/2"

Colors: Brown

50 Grit industrial grade cloth strips provide increased grip for slip-resistance.

Yellow Edge Tape



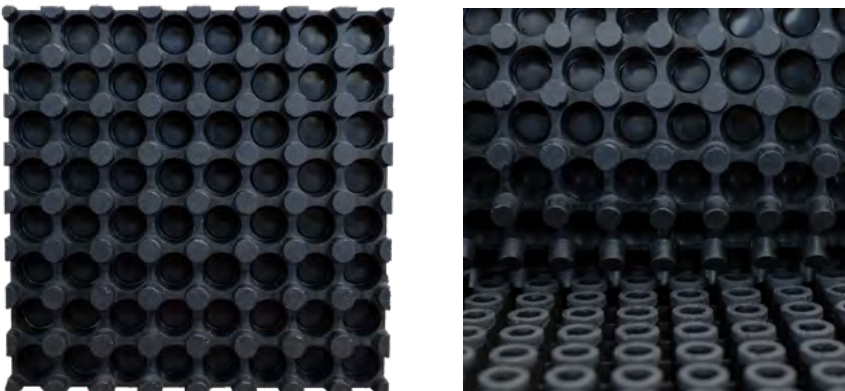
Size: Factory applied, priced per linear foot

Width: 1" or 4"

Colors: Yellow

Enhance edge visibility and grip with the addition of our yellow edge tape. Most commonly used on molded bevel edges.

1" Flooring Stiffener



Size: 6" x 6"

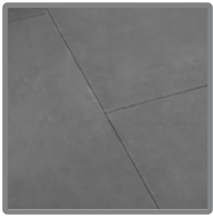
Thickness: 1"

Colors: Black

Inserts into the back of 1" tiles to prevent SmartCells 'buckling', creating a stiffened transition area for thresholds and rolling loads.

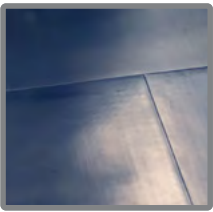
FINISH OPTIONS:

The following are the surface treatment options offered with SmartCells.



Silk Finish

Silk Finish is a surface treatment applied at the factory that reduces the frictional grab of the mat surface and creates a long lasting silky feel. This feature makes cleaning the surface easier and is particularly desirable for persons that shuffle their feet as they walk as well as for athletes who want to avoid a sudden stop upon a landing. Silk Finish is standard on all SmartCells Fall Protection and Training and Therapy mats and optional for other applications. The Silk Finish does not alter the appearance of the mat.



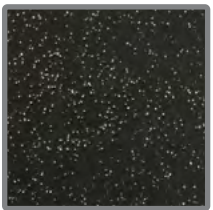
Poly Coat

Poly Coat is a polyurethane coating used to create an attractive, low sheen, yet lustrous surface appearance. The Poly Coat is applied at the factory, bonds to the SmartCells mats or flooring and provides a surface that is easy to clean. Poly Coat finishes also provide increased UV protection and improved resistance to chemical spills. Poly Coat is available on certain SmartCells products and is suitable for most environments and applications.



Poly Fleck

The Poly Fleck option provides a color contrast and encapsulates paint flecks in a polyurethane coating. The paint flecks enhance the look of your floor and makes it easy to integrate SmartCells into your professional environment. The Poly Fleck finish option is offered in several colors including: black, brown, grey, and blue.



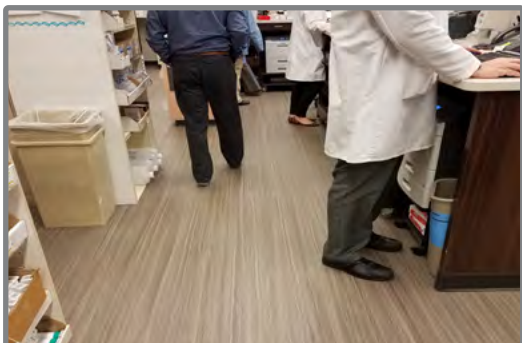
Walnut Husk

The addition of ground walnut husks in a polyurethane finish creates a strong, slip-resistant surface that covers the entire SmartCells surface. The walnut husk particles provide greater protection against slippage for environments that may have a higher risk of slipping and where you want to provide an extra level of safety. This surface may be needed in laboratories, bathrooms (not recommended for shower stalls or in pool areas), common areas in locker rooms, or other environments where slips may be a concern.

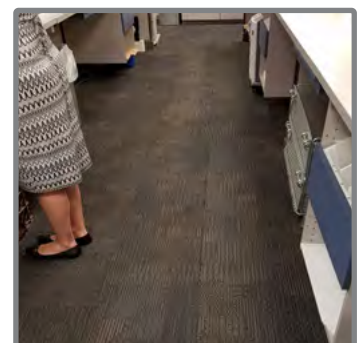
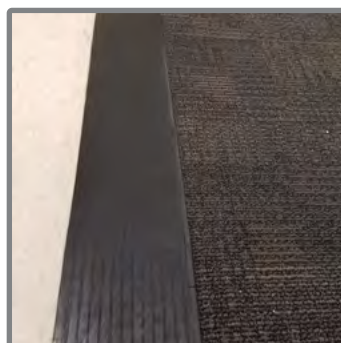
SURFACE OVERLAY OPTIONS:

SmartCells can be used as an underlayment for vinyl and carpet tile. Please contact our customer support team for more information.

Vinyl Overlay



Carpet Tile Overlay





www.smartcellsusa.com